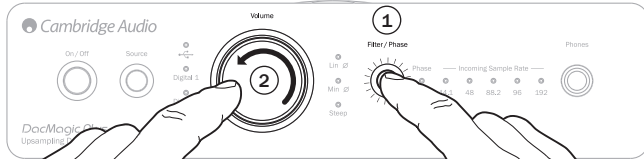


## Balance control

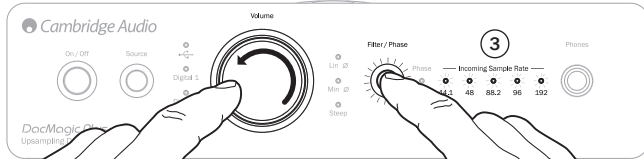
**IMPORTANT! Balance control function is only enabled when the DacMagic Plus is in 'Digital Pre-Amp' mode or when a headphone is plugged-in into the 'Phone' socket. For more information see online manual.**

To adjust the balance control, do the following:

1. Turn the DacMagic Plus on. Press and hold the 'Filter/Phase' button while turning the Digital volume control.



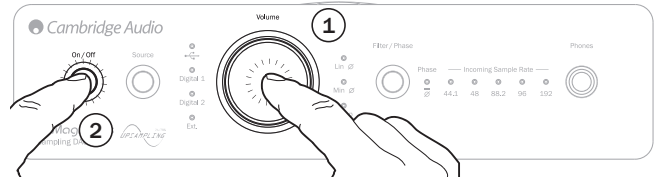
2. The 'Incoming Sample Rate' LED will illuminate when turning the volume control to represent left and right balance adjustments.



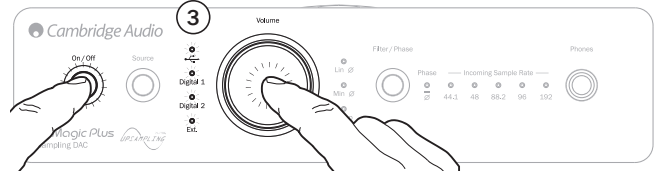
## Digital Pre-Amp mode

The DacMagic Plus comes as default with Digital Pre-Amp mode enabled. In this mode the output from the Unbalanced and Balanced audio outputs is controlled by the front panel Volume control.

If you wish to disable this mode (and have fixed line-level level output from the Unbalanced and Balanced Audio outputs) switch the DacMagic Plus off, then push and hold the Volume control in whilst switching the DacMagic Plus on.



The DacMagic Plus confirms the setting by flashing the source LEDs downwards for Digital Preamp mode and upwards for Fixed Line Level Mode.



Pre-amp mode is enabled/disabled by pressing and holding the volume control during power up.