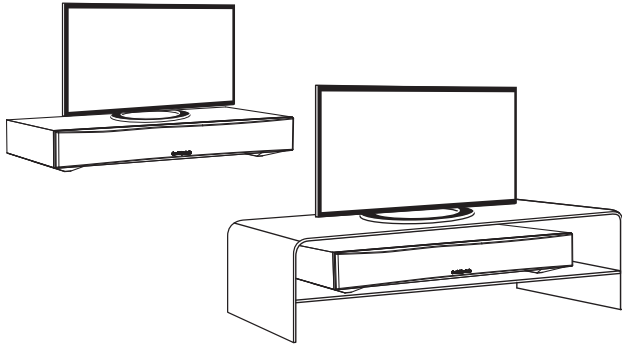


Quick Start Guide

Placement

TV5 is designed to be placed under your TV. The TV must have a base no wider than 725mm (28.5") and no deeper than 300mm (12") and must weigh no more than 30kg (66lbs). If the TV base is too large to fit, place TV5 on a lower shelf of your TV rack.

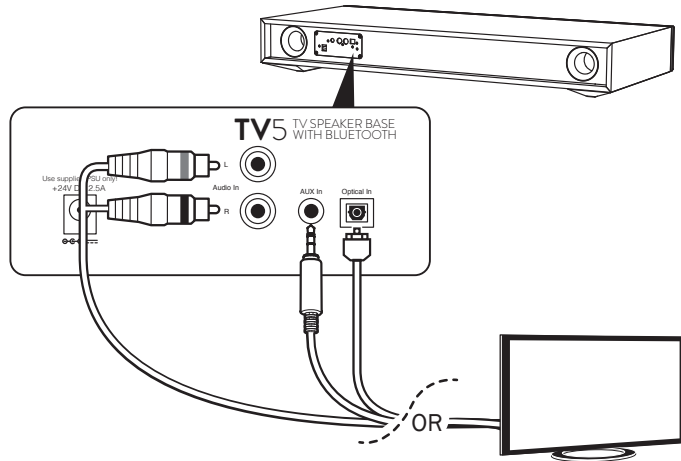


TV Connections

Only one audio connection to your TV is required, in order of preference:

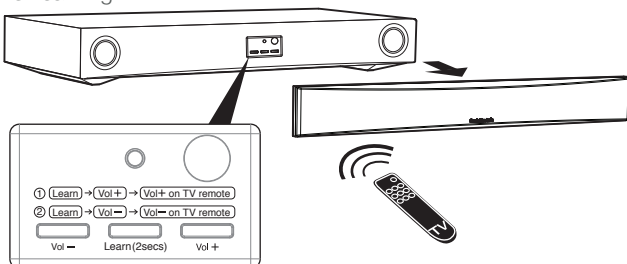
1. Optical: If available on your TV, use this for best quality.
2. RCA: Connect both left and right channels to your TV.
3. AUX 3.5mm: Connect to the headphone output of your TV.

Note: If the 3.5mm socket is used it takes priority over the RCA input which will be muted.



Learning your TV remote

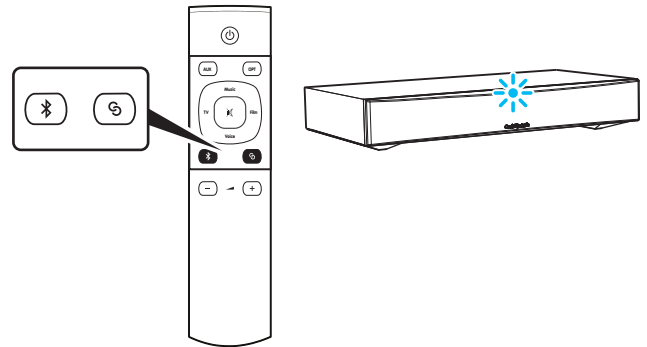
Remove the fabric grille and locate the control panel. Follow the instructions remembering to point your TV remote at the control panel whilst learning.




Bluetooth set-up

TV5 is equipped with Bluetooth to allow wireless playback from any Bluetooth equipped phone, tablet or computer.

1. Select the Bluetooth input  on the remote.
2. To connect a Bluetooth device to TV5 press and hold the pairing button  and the Blue LED  will blink.



3. Consult the instructions of the Bluetooth device to connect to TV5. Successful pairing will be signalled by a 'beep' from the unit and the Blue LED  will stop flashing.

Once paired, music from your device will play through the unit. To add another Bluetooth device, repeat from step 2. TV5 will store up to 8 paired devices in memory.

TOP TIPS

Auto power down

To save power, TV5 will automatically turn off after a few seconds if no sound is playing from your TV.

Auto Power On

When you turn on your TV, TV5 will detect the sound and automatically turn on.

Sound Modes

There are 4 different modes that can be selected to enhance your sound experience.

- TV: Greatly improved TV sound
- Music: Enhances stereo music and music videos.
- Film: Designed to get the best sound from movies.
- Voice: Enhances voices to improve intelligibility.

To talk to us, call +44 (0)203 514 1521 (UK Local) or 1-877-357-8204 (USA)

Cambridge Audio