

Yoyo (M)

Set-up and Troubleshooting Guide

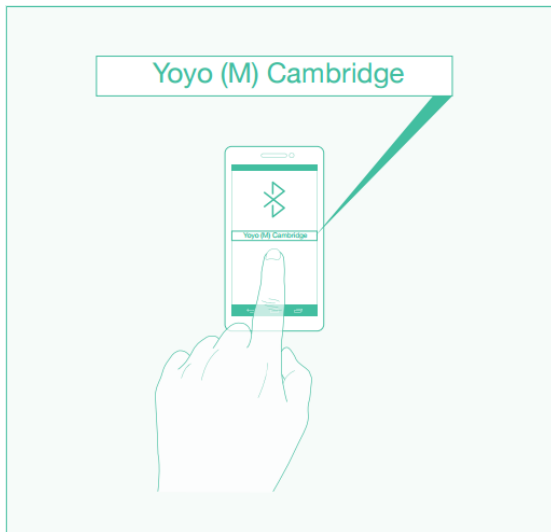


Pairing Process

Luckily, the Yoyo (M)s are already paired during the manufacturing process. You therefore only need to switch both speakers on, to link them together.

To switch the units on, simply hold the power button for approximately two seconds, at which point the unit will emit a 4 note tone and the power and battery indicator lights will illuminate.

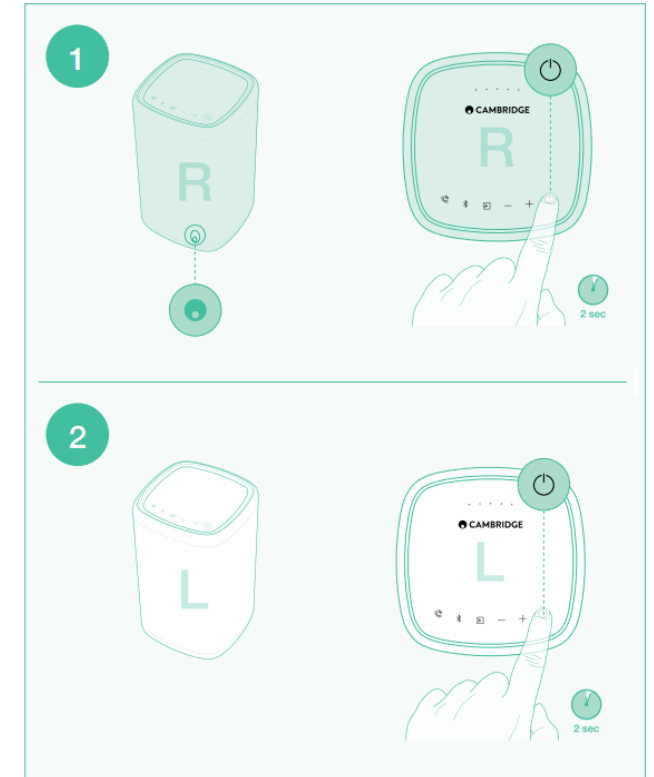
Once both speakers have been powered on, they will both emit a 'beeping' sound to indicate they are paired. The left speaker(with the Great British Sound logo), will also have a solid blue light. The Right speaker will still have a blinking Bluetooth light.



To pair your phone, tablet or laptop to the Yoyo (M)s for the first time, simply navigate to the Bluetooth menu within your device. From here you can scan for new devices.

Once you have scanned, an option should appear entitled "YOYO (M) Cambridge". Simply select this option from your menu and wait a few seconds. The Yoyo will then let out a short beep to indicate the connection has been made.

Then all that is left is to navigate to your music library and press play!

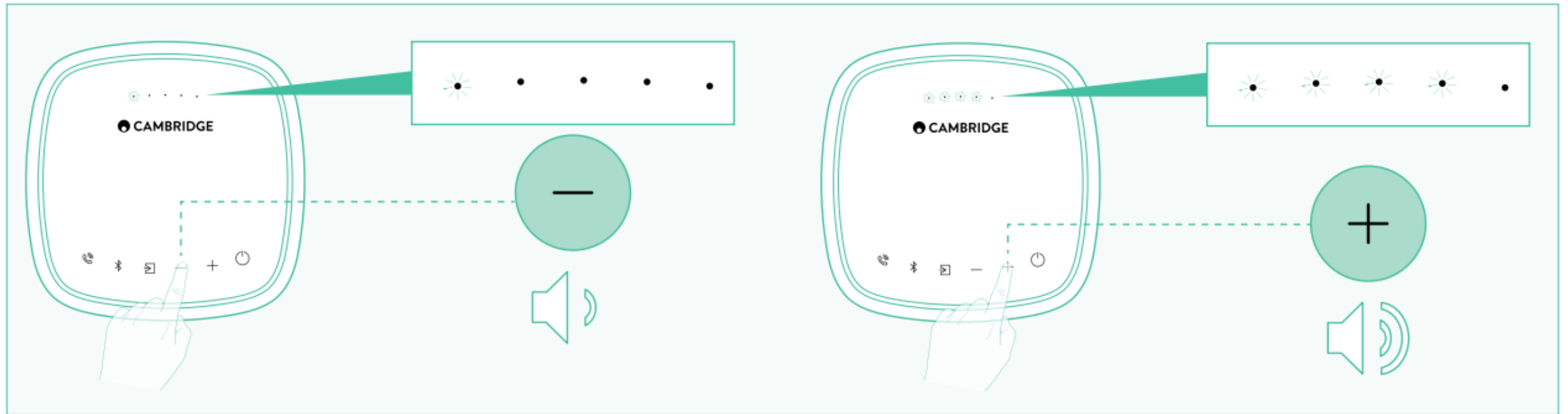


Using the Yoyo (M)

Volume Control

There are two ways to adjust the volume of the Yoyo.

The first follows the traditional method of pressing the + or – buttons on either speaker.



The second can be achieved by adjusting the volume within your connected device. As the Yoyos will synchronise volume with your Bluetooth device, the volume does not need to be independently set on both units.

Gesture Control

To activate Gesture Control, place your hand over either unit and wait until the lights illuminate. Once the lights are illuminated, please find the control steps below:

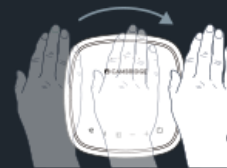
Play - Swipe left to right without music playing



Pause - Swipe right to left with music playing



Skip Forward - Swipe left to right with music playing



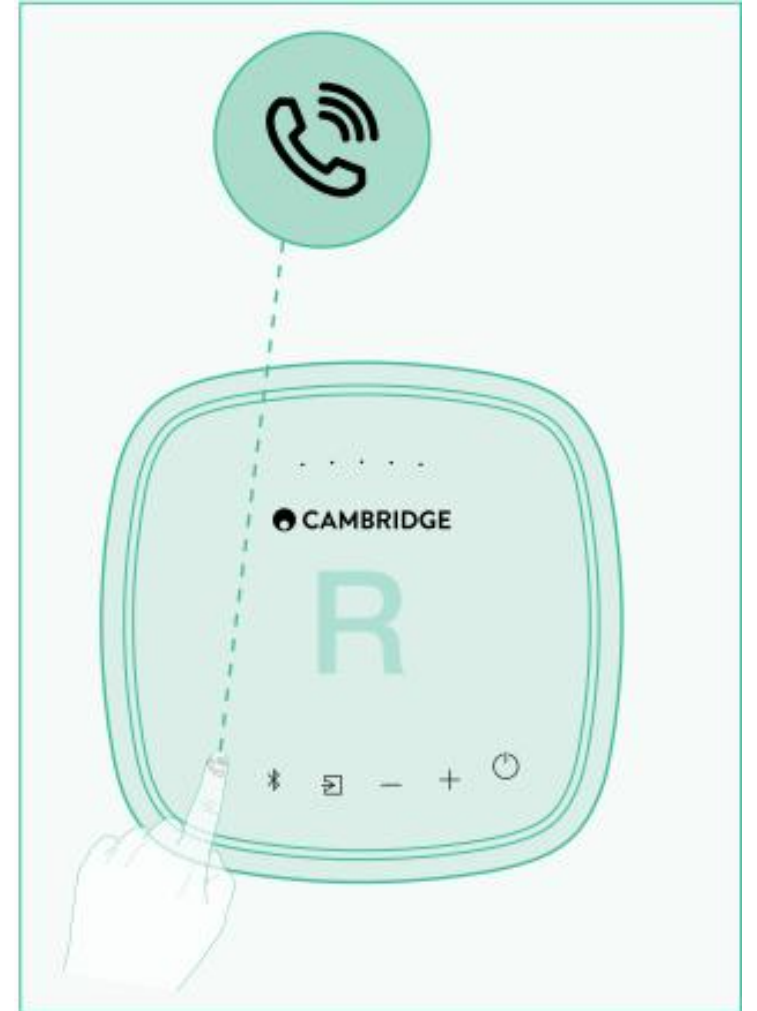
Answering a call

Once the Yoyo has paired with a Smartphone, you are able to receive calls from the units. Once the music stops and you hear your ringtone from the Yoyo, briefly press the Telephone icon on the top of the Right unit.

After a call has been answered, you are able to use the Yoyo as both a speaker and a microphone.

When you are ready to end the call, just tap the Phone icon once more and your music will continue.

Please note: Although you will be able to hear the phone call from both speakers, the control and Microphone functionality will only be active on the Right Speaker.



Auto-Power Down

The Yoyo (M)s have an Auto Power Down (APD) feature. As such, the device will power down after 30 minutes of inactivity.

Battery Maintenance

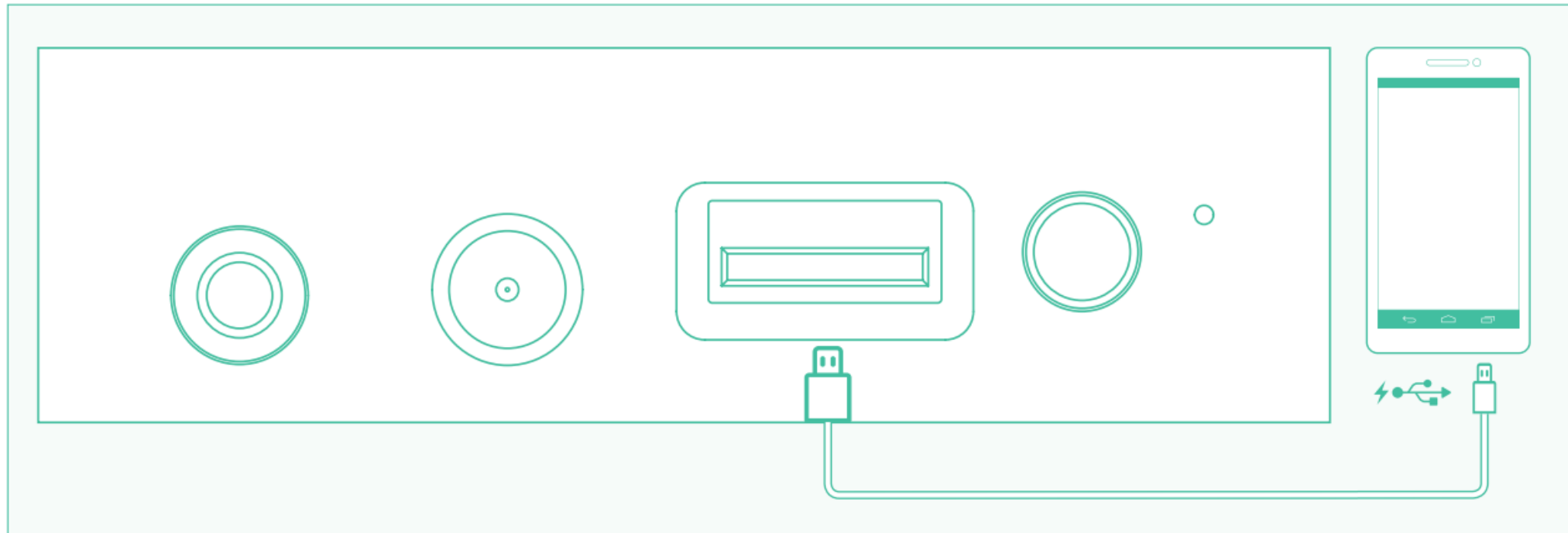
Please recharge the both units every two months to keep the batteries in optimal condition.

Charging a device

The USB ports on the bottom of the Yoyo (M)s have been designed to charge an external device such as a phone or tablet.

You are only able to charge the battery of the speakers via the supplied power supply unit.

It is not possible to charge the speakers via the USB connection.



Troubleshooting

Why is there a delay in audio when I play video via my Yoyo (M) speakers?

Audio latency and delay is something we strive to minimise as much as possible however unfortunately, this is something that cannot be eradicated altogether. The amount of latency does vary, and is dependant on the products you are using. There will always be a slight audio delay when viewing video content via your Yoyo (M) speakers. This is because the right channel Yoyo speaker has to decode and send the appropriate signal to the left speaker via Bluetooth. We recommend using the Yoyo (M) speakers for music only.

Is it possible to separate the Yoyo (M) Speakers?

Whilst the right speaker can be used independently, the left speaker is designed to connect to the right only. Unfortunately it is not possible to completely separate the Yoyo (M) speakers. This connection is made during the manufacturing process to ensure the easy connectivity of the two speakers.

Is it possible to power on both Yoyo (M) speakers simultaneously?

Whilst you are able to power down and adjust the volume level on both speakers simultaneously, it is not possible to switch both speakers on at the same time. This is because a connection between both speakers has to be fully established before any commands can be sent from the primary speaker(right speaker with logo) to the secondary unit.

Troubleshooting

Will the Yoyo (M) speakers play in stereo?

The Yoyo (M)'s will indeed play in stereo via Bluetooth.

Once you have connected your compatible Bluetooth device to the Primary(Right) speaker, the signal will be divided between both Yoyos to produce a true stereo sound.

If you decide to connect to the Yoyos via an auxiliary cable, the speakers will then play as dual-mono sources. This means that both speakers will play exactly the same sound. This is because the Primary speaker(Right) will duplicate the signal of your connected device(Phone, Laptop etc.) and send this to the Secondary speaker(Left).

Please note: The Bluetooth and Auxiliary connections must be made to the Right speaker as the Left speaker can only receive information.

Why do my Yoyo (M)'s turn off after 30 minutes whilst music is playing?

The Yoyo (M)'s have an Auto Power Down (APD) feature. As such the devices will power down after 30 minutes of inactivity. However sometimes, when the audio source level is low(e.g. phone, tablet etc.), the device will register the signal as lower than the APD threshold. To avoid this please ensure that your mobile devices volume is increased to above 40% or more.