

Yoyo (S)

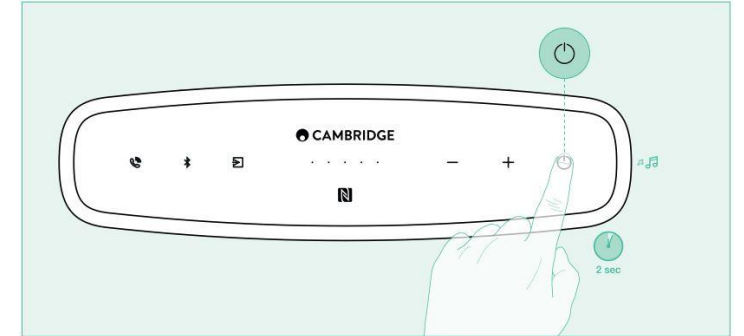
Set-up Guide



Pairing Process

To switch the unit on, simply hold the power button for approximately two seconds, at which point the unit will emit a 4 note tone and the power and battery indicator lights will illuminate.

Once the speaker has been powered on, it will display a rapidly blinking Bluetooth light (📶) on the top.



To pair your phone, tablet or laptop to the (S) for the first time, navigate to the Bluetooth menu within your device. From here you can scan for new devices.



Once you have scanned, an option should appear entitled "YOYO (S) Cambridge". Once this option is available, select it from your menu and wait a few seconds.

The Yoyo will then let out a short beep to indicate the connection has been made and the Bluetooth light will stop flashing.

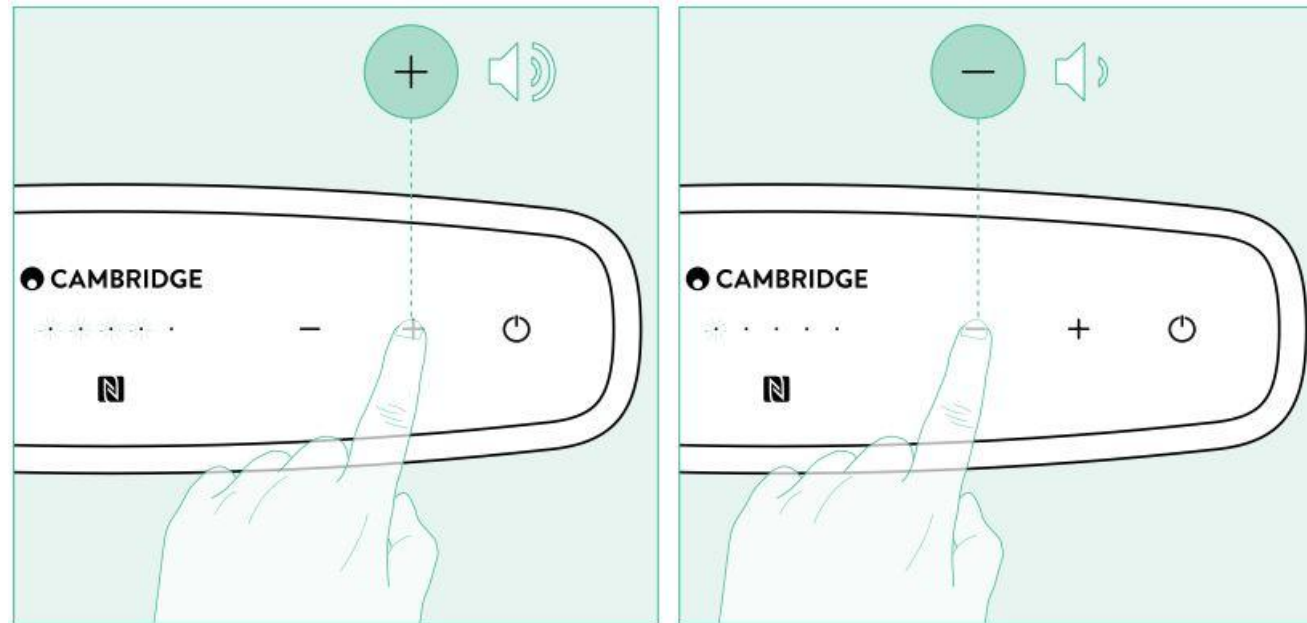
Then all that is left is to navigate to your music library and press play.

Using the Yoyo

Volume Control

There are two ways to adjust the volume of the Yoyo.

The first follows the traditional method of pressing the + or – buttons on the right of the unit (Next to the Power button).

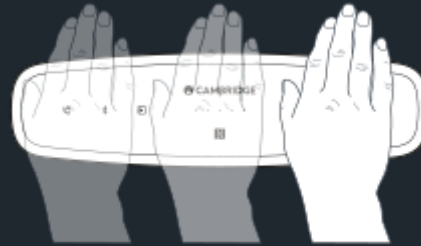


The second can be achieved by adjusting the volume within your connected device. As the Yoyo will synchronise volume with your Bluetooth device, the volume does not need to be independently set on both units.

Gesture Control

If you leave your hand over the unit and wait until the lights illuminate, this is a good starting point for gesture control. Once the lights are illuminated, please find the control steps below:

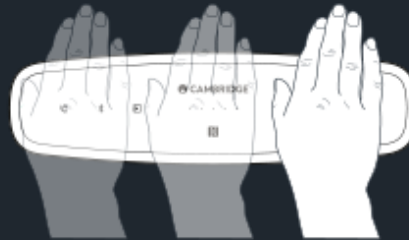
Play - Swipe left to right without music playing



Pause - Swipe right to left with music playing



Skip Forward - Swipe left to right with music playing

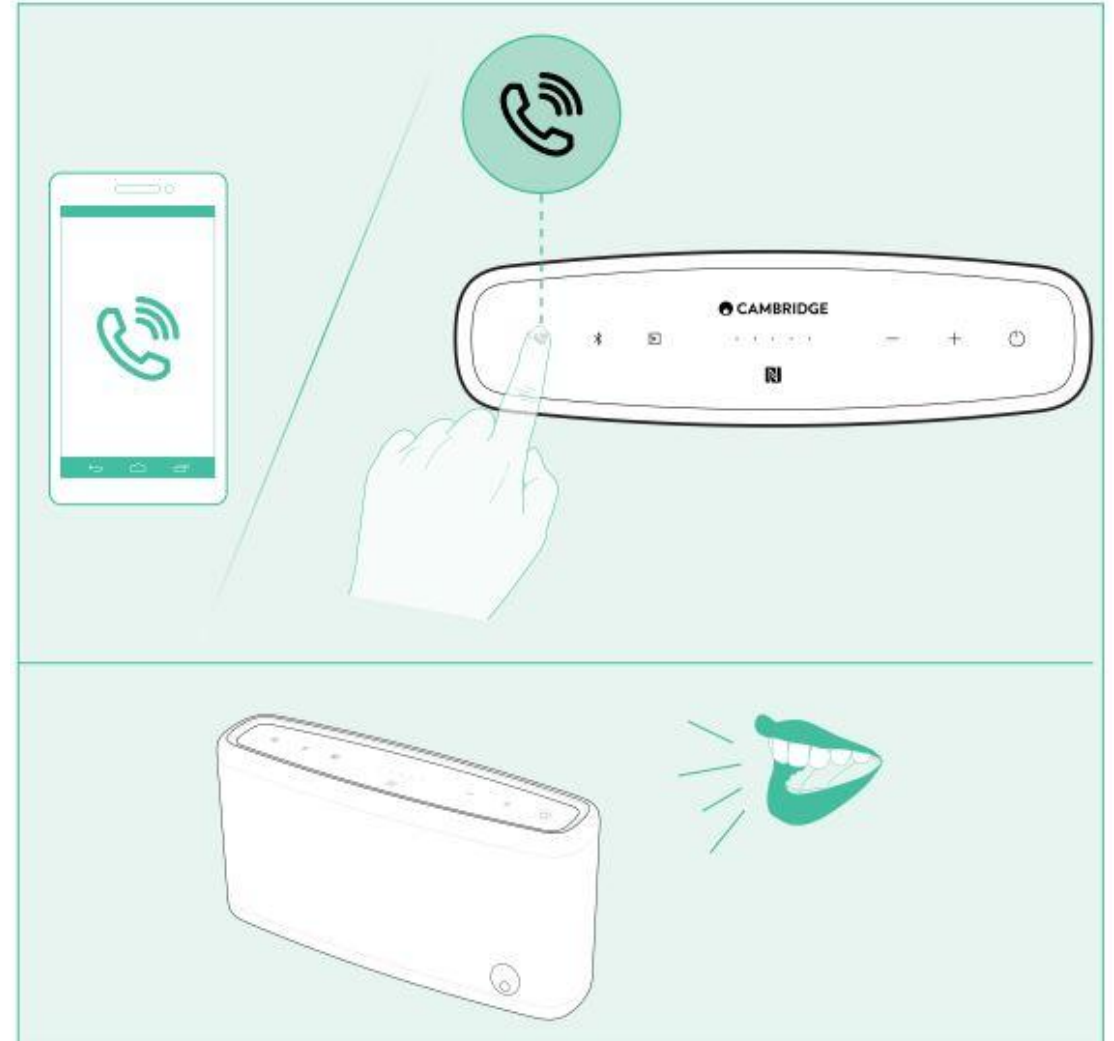


Answering a call

Once the Yoyo has paired with a Smartphone, you are able to receive calls from the unit. Once the music stops and you hear your ringtone from the Yoyo, briefly press the Telephone icon on the top of the unit.

After a call has been answered, you are able to use the Yoyo as both a speaker and a microphone.

When you are ready to end the call, just tap the Phone icon once more and your music will continue.



Auto-Power Down

The Yoyo (S) has an Auto Power Down (APD) feature. As such, the device will power down after 30 minutes of inactivity.

However sometimes, when the audio source level is low (e.g. phone, tablet etc.), the device can register the signal as lower than the APD threshold.

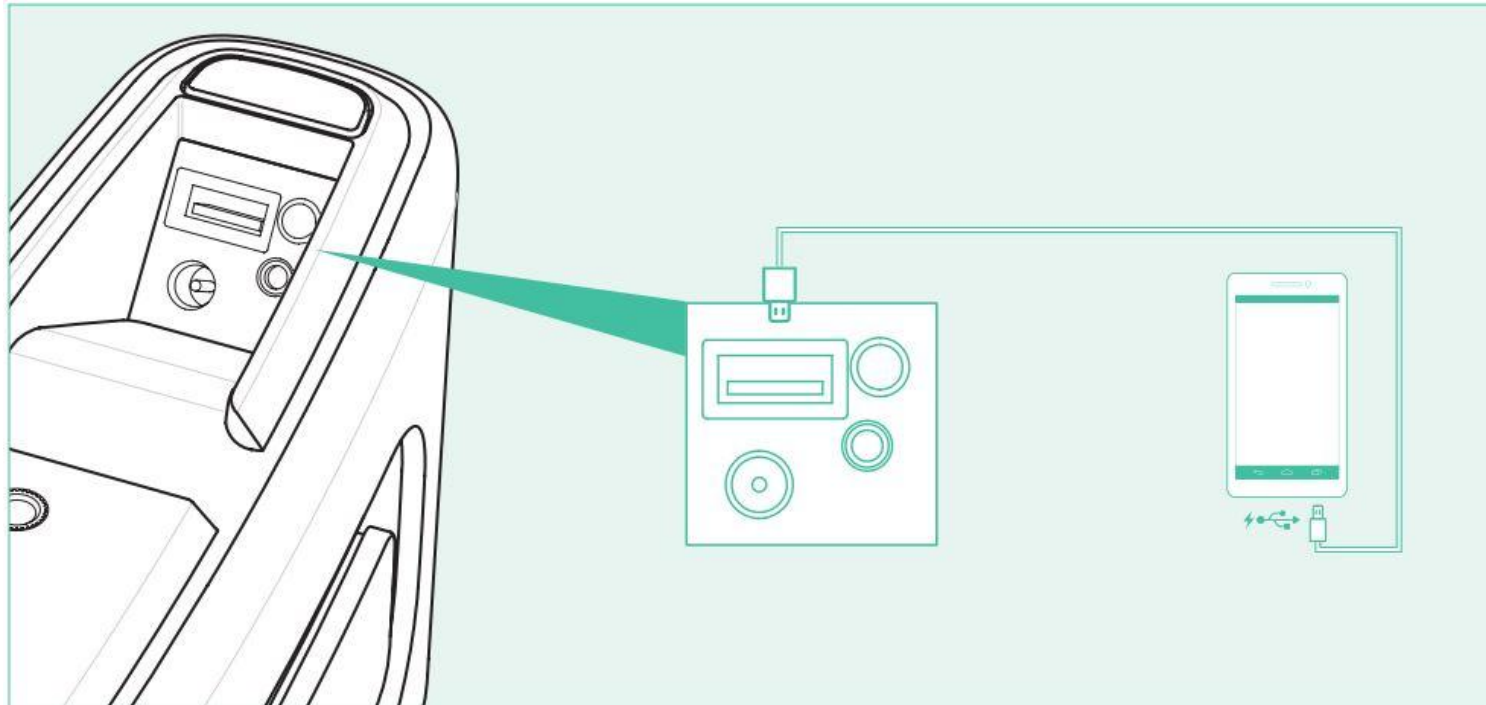
To avoid this please ensure that your mobile devices volume is increased to approximately 40% or more.

Battery Maintenance

Please recharge the unit every two months to keep the battery in optimal condition.

Charging a device

The USB port on the bottom of the Yoyo (S) speaker has been designed to charge an external device such as a phone or tablet.



You are only able to charge the battery of the Yoyo (S) speaker via the supplied power supply unit.

It is not possible to charge the (S) speaker via the USB connection.