

TVB2 SOUNDBAR & WIRELESS SUB

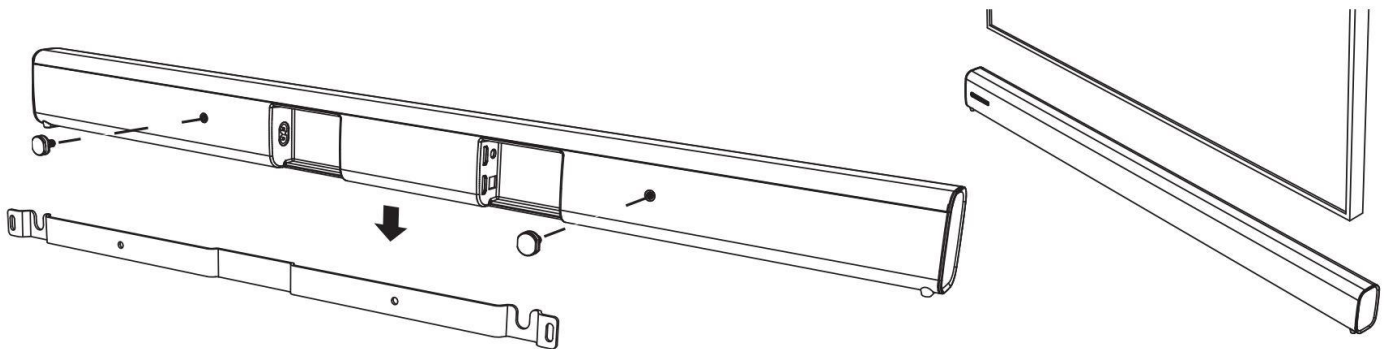
Set-up Guide

Below we have collated an in-depth guide to setting up your TVB2. If however you cannot find an answer to your question or problem, please email us at support@cambridgeaudio.com

Set-up Process

Please place both the bar and sub in the location of your choice ensuring that they are able to connect to a power source. The TVB2 can be placed on a flat surface in front of or under your TV as well as wall mounted with the included bracket and bolts.

If wall mounting, please ensure the bar is securely fastened to your wall with the appropriate size screws.



Next, connect the bar to your TV. For the best connection choice, please see our “Connecting the TVB2 to your TV” section on the next page.

You will need to set your TV's audio output to either PCM or stereo as the bar is unable to understand surround sound signals such as Dolby or DTS.

If you wish to connect a device such as a Blu-Ray player or Satellite/Cable box directly to the TVB2 rather than your TV itself, please see our “Connecting your devices to the TVB2” section on page 4.

Now we are ready to pair the Soundbar and subwoofer. Simply connect both units to power and turn on the Soundbar. The first time connection will take between 1-2 minutes. If the two units cannot pair, then “NO SUB” will appear on the bar. If this occurs, disconnect the subwoofer and bar from mains power before moving the units closer together and then attempt the connection once more.

Switching the TVB2 off

Although you can switch the TVB2 on and off with the remote, this is not necessary as the unit has an Auto-Power function. This means that when the bar receives audio signal, it will power on by itself. This can take up to 10 seconds to start-up fully.

When the bar no longer detects any TV signal, it will switch itself off after two minutes of inactivity.

If you find your TVB2 switches itself on randomly or stays on for longer than two minutes after your TV has been switched off, this may be caused by a small signal from the TV whilst it is on standby. If this occurs we recommend contacting your TV's manufacturer.

Connecting the TVB2 to your TV

HDMI ARC



Benefits of This Connection

The benefits of using HDMI ARC include:

- Simplification of your setup
HDMI ARC reduces the number of cables you will need connected to your TV. When using HDMI ARC you will only need to have one HDMI cable connected to your TV and can connect your set-top box, Blu-ray player or other HDMI sources to the HDMI inputs on the bar.

The TVB2 has 3 HDMI inputs on the rear of the Soundbar. These inputs will pass-through a 4K and 3D signal via HDMI to your TV from any compatible HDMI source connected to the TVB2.

- TV remote controls TVB2
HDMI ARC enables CEC (Consumer Electronics Control) commands to be sent between your TV and TVB2. This means you will only need one remote to power on both devices and control the volume.

HDMI Troubleshooting Tips

No Audio is produced by the TVB2

- Please make sure the HDMI cable you are using is connected to the HDMI out (ARC) on your TVB2 and HDMI socket labelled ARC on your TV.
- Make sure you have HDMI ARC selected on the TVB2 by pressing the ARC button on the remote.
- Please ensure any additional advance settings on your TV have been applied to enable HDMI ARC playback.

There is a loud distorted noise produced by the TVB2

- This may occur as the TVB2 is unable to decode surround sound formats. Please make you are sending the TVB2 a PCM/LPCM/Stereo digital audio signal. If you are unsure on how to do this please consult your TV manual.

There is a slight delay between audio and video

- The TVB2 may have powered down during use, please ensure the Soundbar is switched off and then back on before playing audio again.

Toslink Optical



Benefits of This Connection

A Toslink Optical connection can be useful if your TV does not have an HDMI ARC connection built in. It also allows the simplicity of one direct audio connection from your TV to the bar without the need to remove all of your devices from their current configuration.

Optical Troubleshooting Tips

No Audio is produced by the TVB2

- Please make sure the Optical cable you are using is connected to the Optical output of your TV as well as the socket labelled Optical on your TVB2. These connections will need to be pressed in until a click occurs.
- Make sure you have OPT selected on the TVB2 by selecting the corresponding button on the remote.
- Make sure any additional advance settings on your TV have been applied.

There is a loud distorted noise produced by the TVB2

- This may occur as the TVB2 is unable to decode surround sound formats. Please make you are sending the TVB2 a PCM/LPCM/Stereo digital audio signal. If you are unsure on how to do this please consult your TV manual.

There is a short dropout of audio at the beginning of a programme or advert

- This is can be caused by your TV briefly reverting to a non-supported audio format before switching back to PCM/Stereo. There are no settings within the bar to compensate for this as the issue lies within the TV itself.

3.5mm Aux Connection



Benefits of This Connection

A 3.5mm Aux connection can be useful if your TV does not have a Toslink Optical or an HDMI ARC connection built in. Although it provides the simplicity of one direct audio connection from your TV to the bar without the need to remove all of your devices from their current configuration, the audio quality will be reduced as this is an analogue connection.

Aux Troubleshooting Tips

No Audio is produced by the TVB2

- Please make sure the Aux cable you are using is connected to the Headphone or Aux output of your TV as well as the connection labelled AUX on your TVB2. These connections will need to be pressed in until a click occurs.
- Make sure you have AUX selected on the TVB2 by selecting the corresponding button on the remote.
- Make sure any additional advance settings on your TV have been applied.

Connecting your devices to the TVB2

HDMI

As the TVB2 contains three HDMI inputs and is capable of HDMI pass-through, you are able to add other units such as a Blu-Ray player or Satellite TV/Cable box to the bar rather than your TV.

There are a few benefits of utilising this connection.

- This will allow your TVB2 to receive direct audio that has not been processed by the TV ensuring a clear signal.
- If your TV only has two HDMI input/outputs, this will provide additional options without the need for clunky HDMI splitters.
- If your TV is wall mounted, this option will provide a tidy, convenient option as it eliminates the need for multiple cables to be fed through your wall to the TV as only one single cable is required.

To connect these devices, simply connect the HDMI cable from your unit into either HDMI 1, 2 or 3 of the bar. These inputs can then be selected by pressing the corresponding button on the remote.

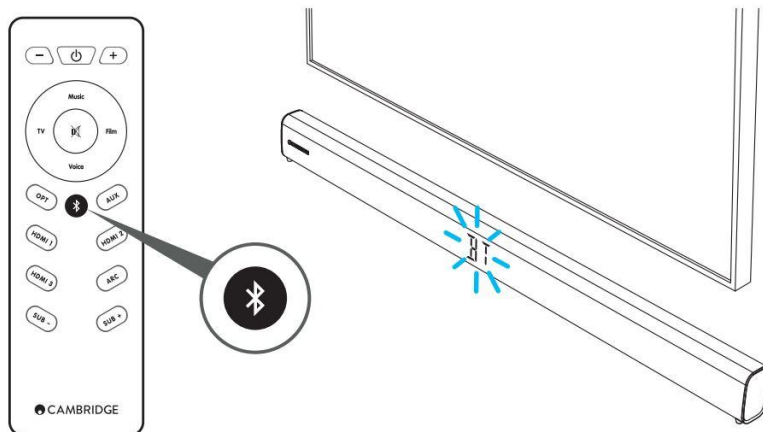
Bluetooth

If you have a Bluetooth enabled device such as a phone or tablet, you are able to stream your music to the TVB2. This includes streaming services such as Spotify, Deezer or Pandora.

We do not advise you to connect to the TVB2 from your TV via Bluetooth as there may be a delay in the synching of image and audio.

To connect to the TVB2 via Bluetooth for the first time, please follow the steps below.


- Press the Bluetooth button on the TVB2 remote. BT should then begin to slowly pulse on the units display as below.



- Once BT is pulsing, press and hold the Bluetooth button. Once BT begins to pulse more rapidly, the TVB2 is available to connect to.
- You are then able to follow the Bluetooth settings of your chosen device and connect to the bar.
- Once paired, the bar will display a flashing '–' symbol until audio from your device is playing.

Once this process has been completed once, your device should then remember the TVB2. Providing your device has Bluetooth switched on, you can then reconnect at any time by momentarily pressing and holding the Bluetooth button.


The TVB2 will remember up to 99 devices, so if you would like to add any other devices, just follow this guide to pair.

If you have an NFC enabled device, you can connect to the bar by first enabling Bluetooth within your device, then touching it against the  logo on the left side of the TVB2. The TVB2 will then enter automatic pairing mode and 'TVB2' Cambridge should appear on your device.


Pairing your Remote

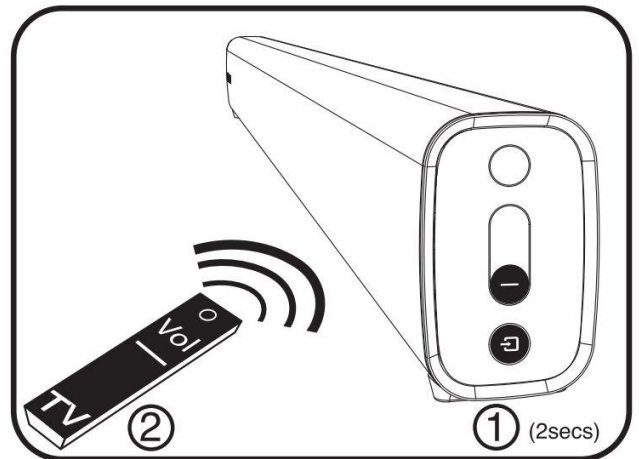
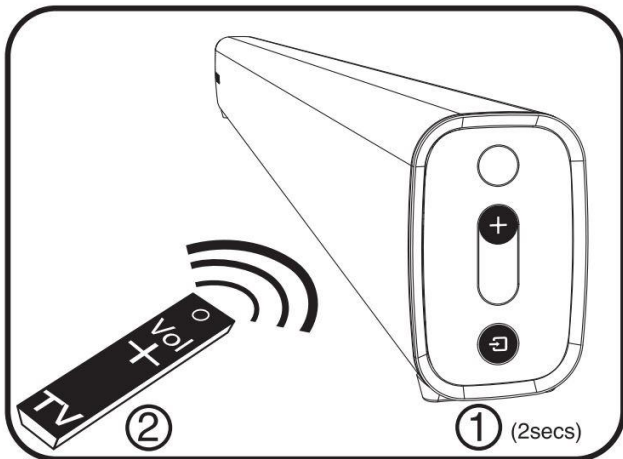
The TVB2 has the ability to learn your TV remotes volume commands. This feature is only necessary when using either the optical or 3.5mm Aux connection. This is because your TV remote will control the bar via HDMI ARC, as mentioned above.

To learn the Vol+ button on your television's remote

- Press and hold the  and + button on the right side of the TVB2 for 2 seconds. "LEARN" and "VOL +" will flash on the display.
- Then double press the Vol+ button on your television remote, remembering to point it at the TVB2's display.
- After the remote has connected successfully, "OK" will be shown on the display.

To learn the Vol- button on your television's remote

- Press and hold the  and - button on the right side of the TVB2 for 2 seconds. "LEARN" and "VOL -" will flash on the display.
- Then double press the Vol- button on your television's remote, remembering to point it at TVB2's display
- After the remote has connected successfully, "OK" will be shown on the display.



Remote Buttons Explained

